



THE CENTER FOR IDEA
EARLY CHILDHOOD DATA SYSTEMS

Introducing the DaSy Center

National Kickoff Call
February 11, 2013



What is DaSy?

- A new 5-year Center funded by OSEP to assist states with improving Part C and Part B preschool data by:
 - Building better data systems
 - Coordinating data systems across early childhood programs
 - Building longitudinal data systems
 - Building the capacity of states to use data

Center's Goals

- Provide national leadership and coordination around EC data systems
- Generate new knowledge and useful products regarding statewide EC longitudinal data systems
- Design and implement a continuum of technical assistance strategies to improve state capacity to collect, analyze, and report high quality data

The time is right



Recognition of the

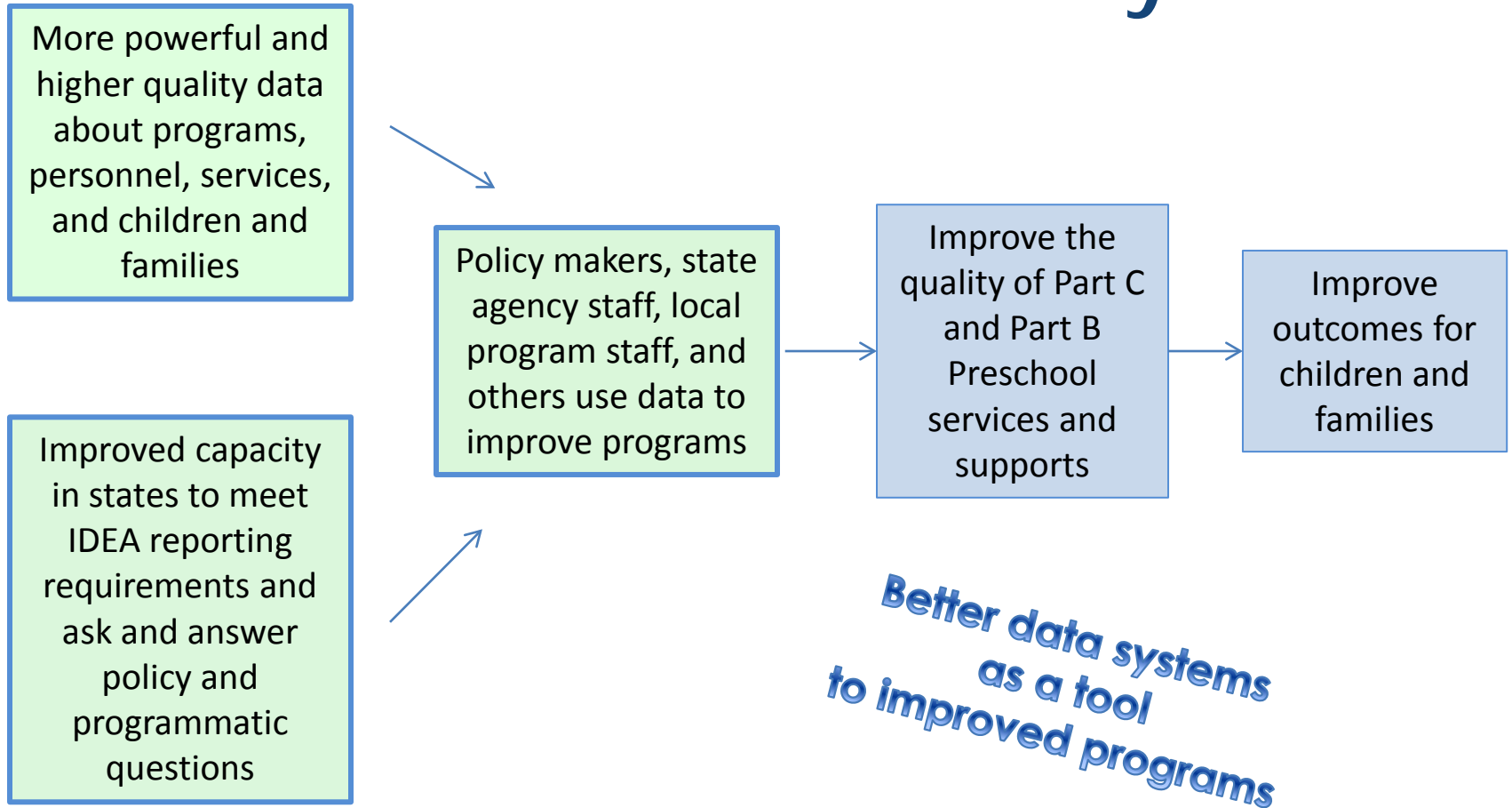
- The importance of early childhood
- Need for good data
- Need for coordinated early childhood data systems
- Need for longitudinal data systems

Resources for

- Building coordinated EC systems (RTT-ELC)
- Building state data systems (SLDS, CEDS, PTAC, RTT-ELC)

State and local programs are increasingly aware of the importance of having good data.

Where DaSy fits



Activities: Knowledge Development

- Collect information from states about current and planned data systems for Part C and Part B Preschool including links to other data systems
 - Watch for our online survey coming to Part C and Part B preschool coordinators in a few weeks
- Develop a framework for Early Childhood Data Systems
- Develop documents and resources (e.g., best practices, lessons learned) to support the use of the framework to improve data systems

Activities: TA and Dissemination

- Use framework to provide intensive TA to 10 states (phase in, years 2 and 3)
- Promote critical data system requirements
- Develop national TA network
- Provide a continuum of general TA and dissemination activities
- Maintain a website
- Prepare and disseminate reports, documents, and other materials
- Support states in developing data systems to address APR performance and compliance indicators

Activities: Leadership and Coordination

- Establish and maintain stakeholder committee to guide and review the work of the center
- Communicate and collaborate with relevant projects
- Support communities of practice
- Work with TACC on new products
- Contribute products to TACC database
- Coordinate with NICHY to develop a dissemination strategy

Some Key Collaborations

- OSEP Early Childhood Technical Assistance (ECTA) Center
- OSEP Early Childhood Personnel Center (ECPC)
- Support team for the State Longitudinal Data System (SLDS) grants
- Common Education Data Standards (CEDS)
- Early Learning Challenge (ELC)TA Consortium
- Privacy Technical Assistance Center (PTAC)
- Center on Enhancing Early Learning Outcomes (CEELO)
- Early Childhood Data Collaborative (ECDC)

Who are we?

- SRI International
- Frank Porter Graham (FPG) Child Development Institute
- Applied Engineering Management (AEM)
- Westat
- Center for Technology in Education (CTE) at Johns Hopkins University (JHU)
- Cadre of national experts

SRI International

- Long history of work in special education and early intervention
- Conducted the National Early Intervention Longitudinal Study (NEILS)
- Oversee the Early Childhood Outcomes Center (ECO)
- Headquarters in Menlo Park, CA with offices around the world including Arlington, VA

DaSy at SRI



Donna Spiker and Kathy Hebbeler



Lauren Barton



Frances Bergland



Taletha Derrington



Laura Hudson

Suzanne Raber



Cornelia Taylor



Sara Thayer

Jennifer Tschantz

DaSy at Frank Porter Graham (FPG)

- A very long history of providing technical assistance to programs serving young children with disabilities and Part C and Part B preschool state agencies
- Operate the newly funded Early Childhood Technical Assistance (ECTA) Center
- Located at the University of North Carolina in Chapel Hill, NC

DaSy at FPG

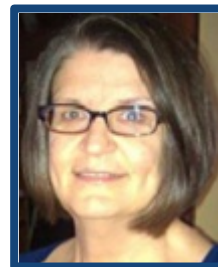
Martha Diefendorf and Lynne Kahn



Siobhan Colgan

Kathi Gillaspay

Mary Peters



DaSy at AEM

- Background in data systems development and technical assistance
- Operates several important related efforts including:
 - Technical assistance for the State Longitudinal Data System (SLDS) grant program
 - Support to the development of the Common Education Data Standards (CEDDS)
 - Privacy Technical Assistance Center (PTAC)
 - Technical assistance for the Race to the Top – Early Learning Challenge states
- Headquarters in Chantilly, VA

DaSy at AEM



Missy Cochenour and Beth Caron



Baron Rodriguez

Jeff Sellers



Jim Campbell

Nancy Copa



DaSy at Westat

- Long history of work in special education and data systems
- Conducted the Preschool Elementary Longitudinal Study (PEELS)
- Provided support for the collection of the IDEA 618 data for many years most recently as the Data Accountability Center (DAC)
- Located in Rockville, MD

DaSy at Westat



Joy Markowitz
Haidee Bernstein
Danielle Crain



DaSy at CTE

- Expertise in data systems development and applications of technology to professional development
- Developed IDEA birth to 21 longitudinal data system for Maryland
- Program development including development of comprehensive assessment system for RTT-ELC grant for Maryland
- Located in Columbia, MD

DaSy at CTE



Amy Nichols and Jackie Nunn



Chadia Abras

Rob Caples

Dave Peloff



Expert Consultants

Consultant	Expertise
Robin Nelson	Part C, data systems, APR, 618, use of data
Sharon Walsh	IDEA, policy, state systems, confidentiality, use of data
Mary Beth Bruder	IDEA, workforce data, personnel, service coordination
Carl Dunst	Part C, child find, service provision, adult learning
Maureen Greer	Part C, state systems, finance
Bruce Bull Karen Martens	IDEA, data systems, APR, 618
Jamie Kilpatrick	Part C, states systems, data systems
To be named	As other needs are identified

What we will do

Activity	When
On-line Needs Assessment : Compile information on state data systems and key areas where state would like help	March
Framework Development (4-6 partner states)	
• Solicit applications	March-April
• Select states	May
• In person framework development meetings	May, August, Nov, Feb
• Framework completed	March 2014

What we will do

Activity	When
Topical Meetings	Throughout the year
National Meeting <ul style="list-style-type: none">• Paired with ECO meeting for 2013	September 2013?
Resource Materials (print, online, video)	
National webinars	
Communities of practice	
Intensive TA (10 states)	
<ul style="list-style-type: none">• Select 5 states	Spring 2014
<ul style="list-style-type: none">• Select 5 more states	Spring 2015

Projected opportunities for states selected through an application process

OSEP-funded project	Opportunities for states selected through an application process*				
	Year 1	Year 2	Year 3	Year 4	Year 5
Early Childhood TA Center (ECTA)					
<ul style="list-style-type: none"> System Framework Partner States 	(6)	cont.			
<ul style="list-style-type: none"> Intensive TA: building effective C/619 systems using the System Framework tool(s) 			(2-4)	cont.	cont.
<ul style="list-style-type: none"> Intensive TA: implement, scale up & sustain recommended practices 		(2)	cont. (2)	cont. cont.	cont. cont.
<ul style="list-style-type: none"> Intensive TA: outcome measurement systems (in collaboration w/ <u>DaSy</u>) 		(1-2)	cont. (1-2)	cont. cont.	cont. cont.
Early Childhood Longitudinal Data Center (DaSy)					
<ul style="list-style-type: none"> Data Systems Partner States 	(4-6)				
<ul style="list-style-type: none"> Intensive TA: building effective data systems 		(5)	cont. (5)	cont. cont.	cont. cont.
Early Childhood Personnel Center (ECPC)					
<ul style="list-style-type: none"> Intensive TA to build EC-CSPD 	(4)		(4)		

*All states will have opportunities for General and Targeted TA from the three centers. This chart depicts only the opportunities that will require an application process.

How to request help from DaSy

- Email any DaSy staffer
- Email to dasycenter@sri.com
- Call Frances Bergland at 650-859-2521



Upcoming Webinar

Sustainability and Success in Early Childhood Data Systems: Understanding the Basics of Data Governance

Tuesday, February 12, 2013, 2:00 PM - 3:30 PM EST

Go to:

<http://www.ecedata.org/>

for more information

Much more to come....

<http://dasycenter.org/>



